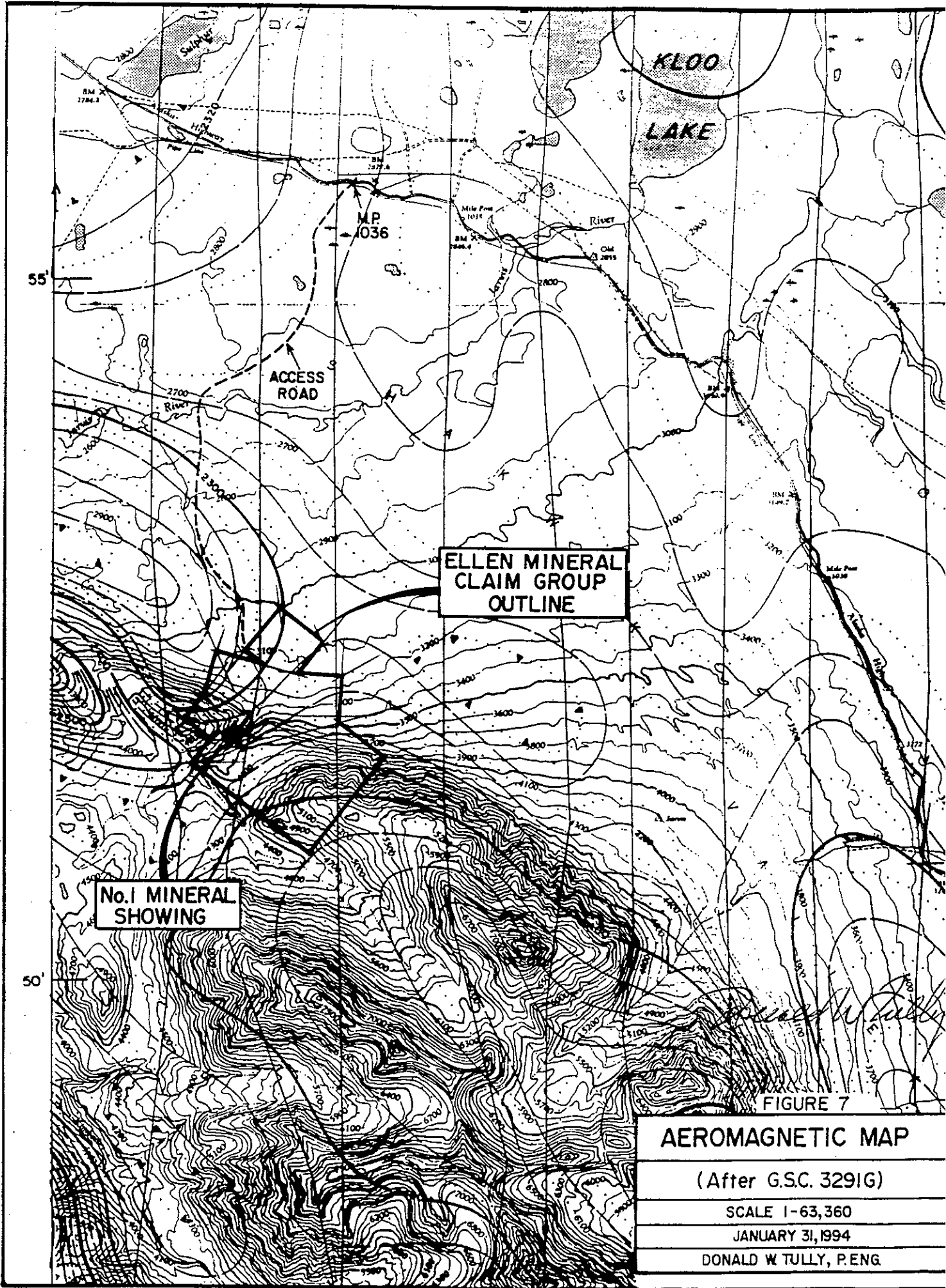


**Geological Evaluation Report on the
Ellen Mineral Claim Group
from January 31, 1994**

Appendix A

APPENDIX A

Map Figures 7 thru 20 inclusive



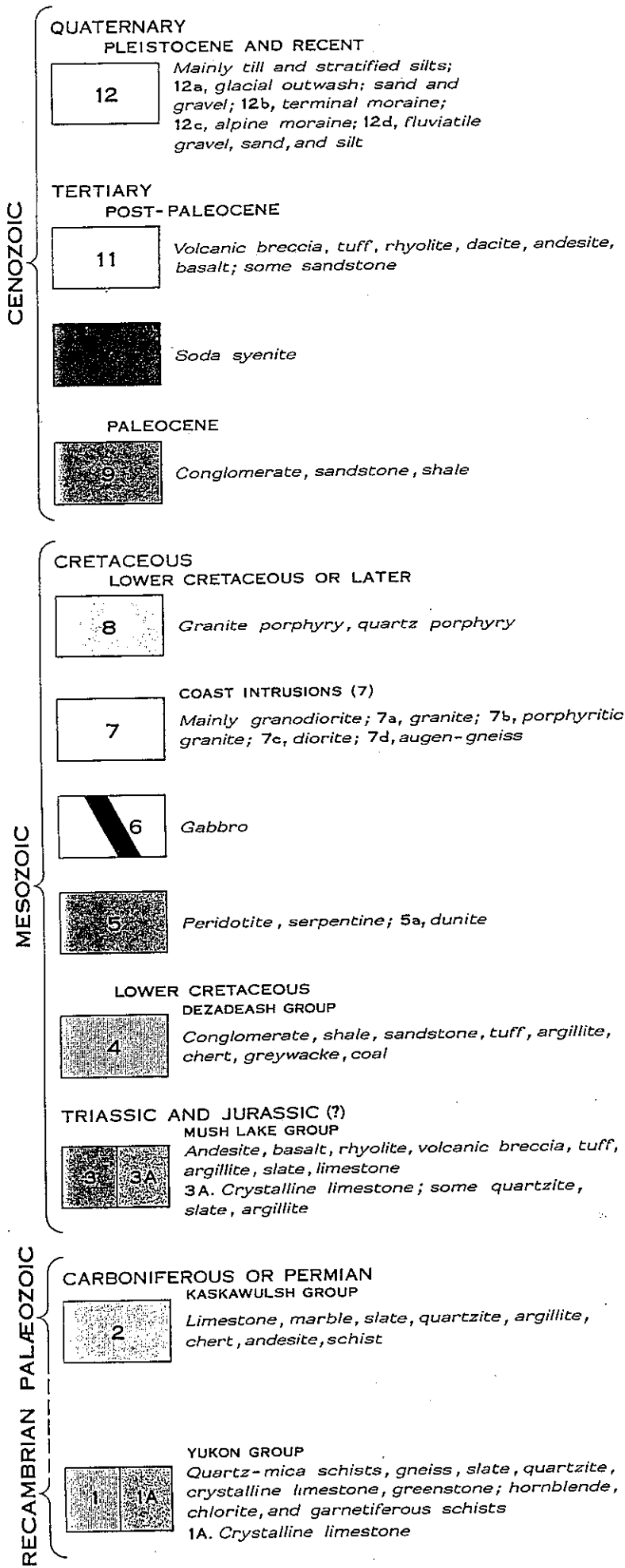
ELLEN MINERAL
CLAIM GROUP
OUTLINE

No. 1 MINERAL
SHOWING

FIGURE 7

AEROMAGNETIC MAP
(After G.S.C. 3291G)
SCALE 1-63,360
JANUARY 31, 1994
DONALD W TULLY, P. ENG

LEGEND



Donald W. Tully

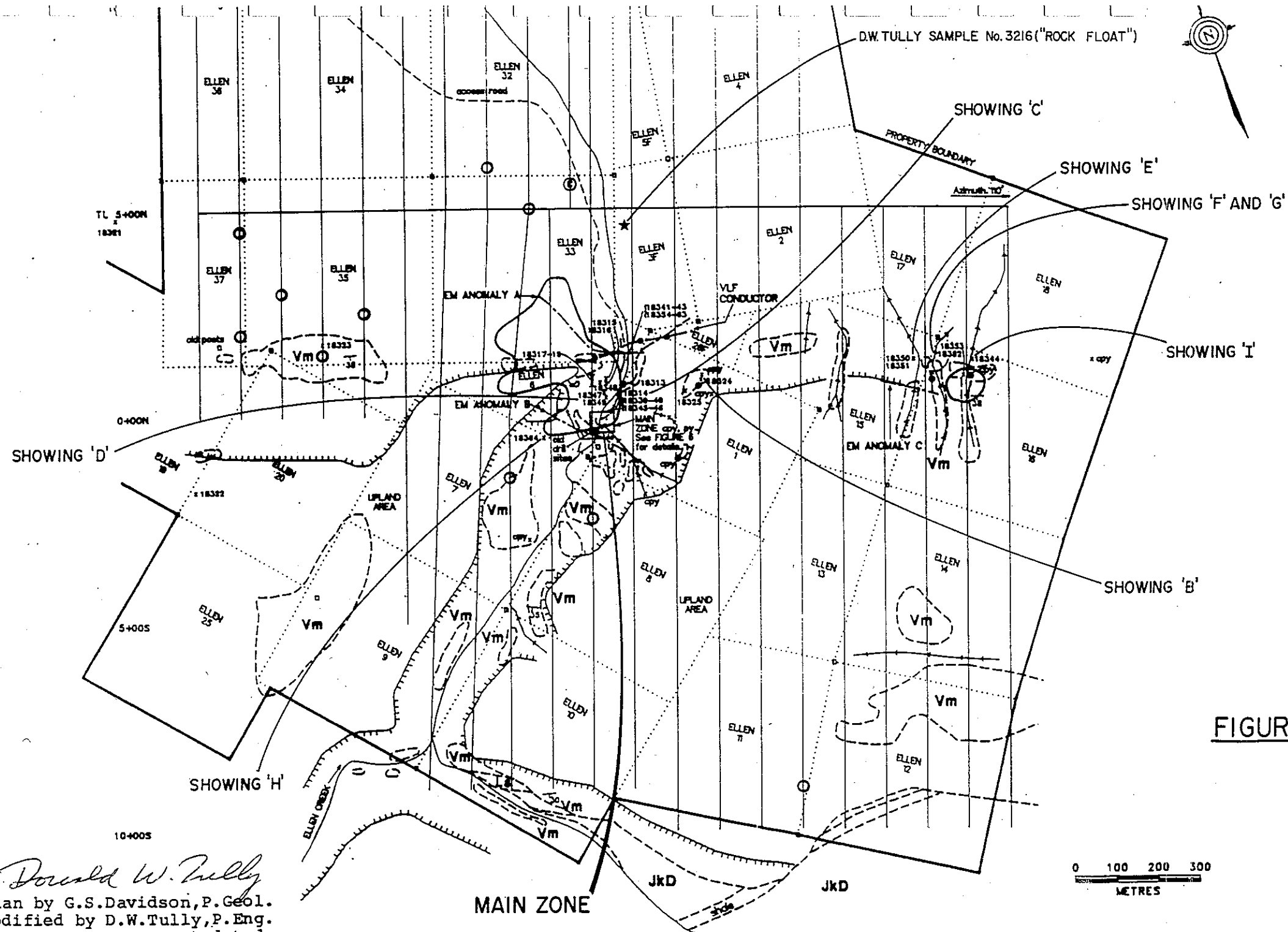
FIGURE 10

LEGEND TO ACCOMPANY
GSC MAP 1019A FOR
FIGURE 6

TO ACCOMPANY A REPORT
BY DONALD W. TULLY, P. ENG.
DATED JANUARY 31, 1994



D.W. TULLY SAMPLE No. 3216 ("ROCK FLOAT")



PMvs	Vm	Mafic v gneiss and gr
	Ls	Limest bedime
SYMBOLS		
		Outcrop, strike
		Cu geochem
		HLEM conductor
		VLF conductor
		Blast or bench
		Rock sample location
		Narrow gully
		Edge of upland
		Claim boundary
		Camp

ROCK SAMPLE	
SAMPLE NO.	WIDTH (cm)
18313	grab
18314	grab
18315	grab
18316	grab
18317	grab
18318	grab
18319	grab
18320	grab
18321	grab
18322	grab
18323	grab
18324	grab
18325	grab
18326	grab
18327	grab
18328	grab
18329	grab
18330	grab
18331	grab
18332	grab
18333	grab
18334	grab
18335	grab
18336	grab
18337	grab
18338	grab
18339	grab
18340	grab
18341	grab
18342	grab
18343	grab
18344	grab
18345	grab
18346	grab
18347	grab
18348	grab
18349	grab
18350	grab
18351	grab
18352	grab
18353	grab
18354	grab
18355	300
18356	250
18357	200
18358	200
18359	200
18360	300
18361	200
18362	200
18363	200
18364	grab

FIGURE II

PROBE RESOURCE	
ELLEN CLAIM PROPERTY PL	
G. DAVIDSON, CONSULTING	
SCALE: 1 : 10,000	
D.T.S.: 115 A/13	DRAWN: COS

Donald W. Tully
Plan by G.S. Davidson, P. Geol.
Modified by D.W. Tully, P. Eng.
to accompany a report dated
31 January, 1994.

SYMBOLS

x 117 Soil sample location, Cu-ppm
(see other symbols below)

Plan by G.S. Davidson, P. Geol.
Modified by D.W. Tully, P. Eng.
to accompany a report dated
31 January, 1994

Donald W. Tully

COPPER GEOCHEMISTRY

PERCENTILE	PPM
MAXIMUM	4818
98	652
95	412
90	266
70	173
50	126
MINIMUM	32

Number of Samples - 678
Ins - Insufficient pulp for assay

○ Zone of Anomalous
Copper Values

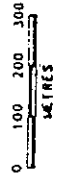


FIGURE 13

PROBE RESOURCES LTD.

ELLEN CLAIMS
COPPER GEOCHEMISTRY - ppm

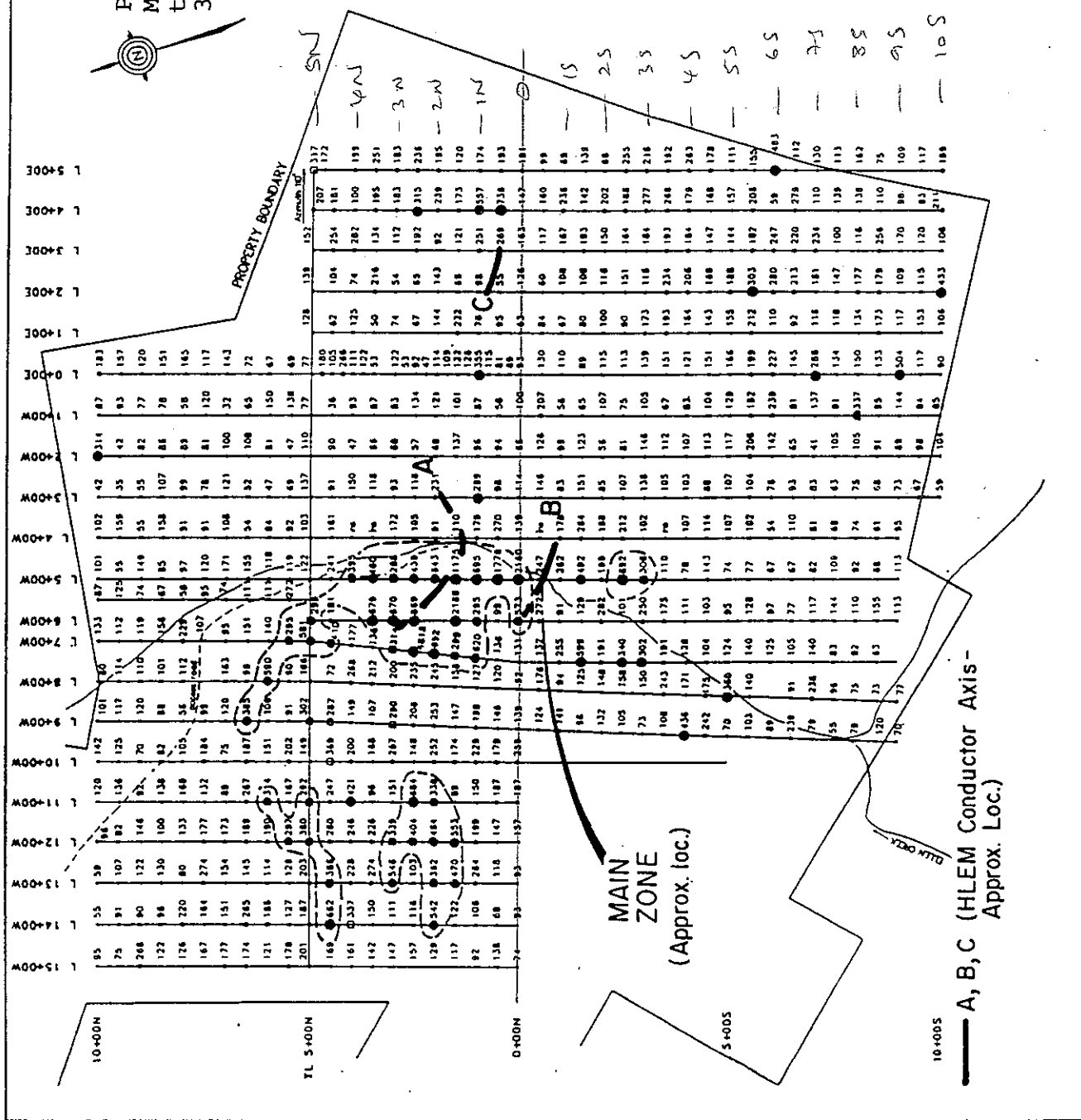


TABLE 2

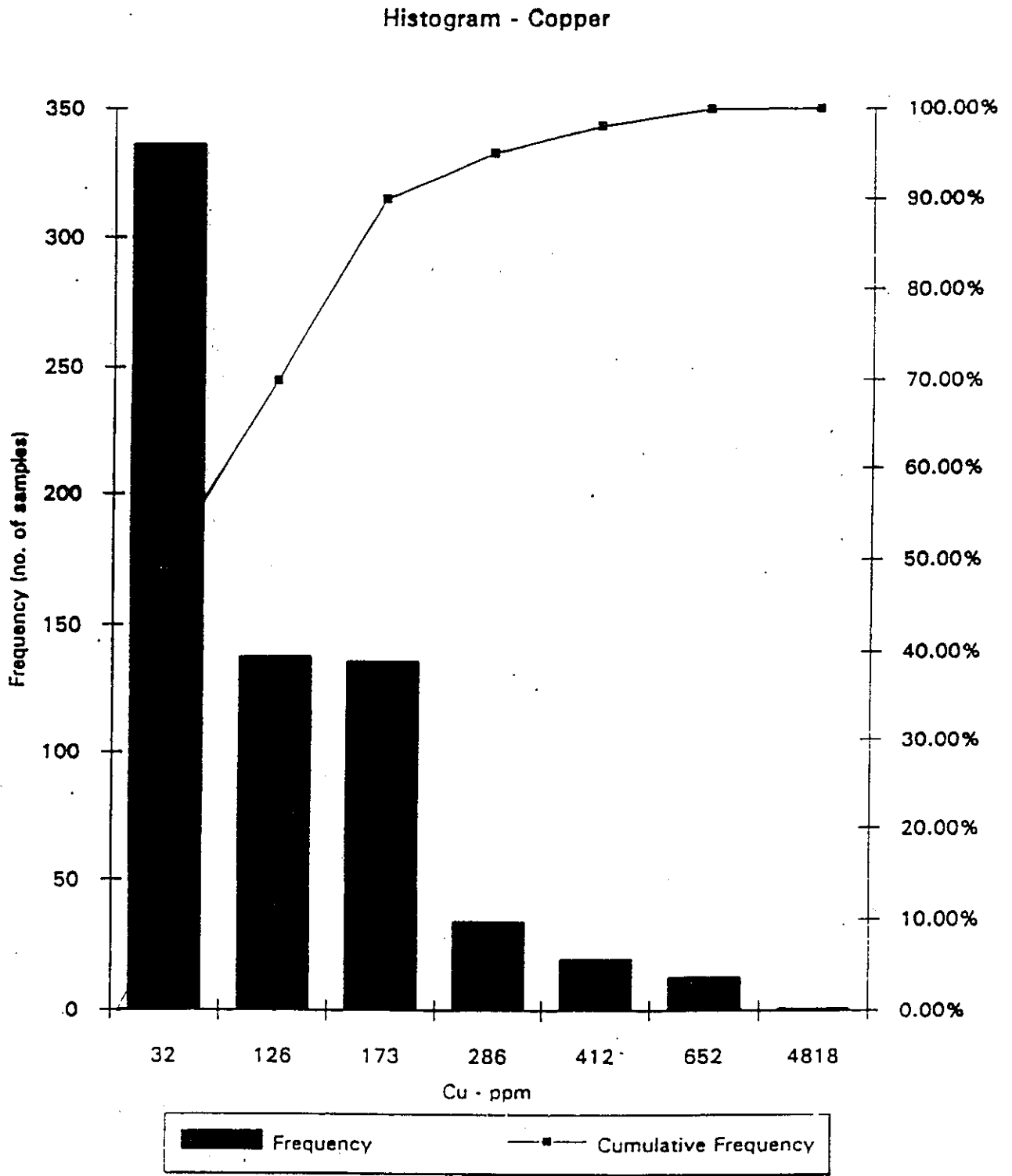


Table by G.S. Davidson, P. Geol.
Modified by D.W. Tully, P. Eng.
to accompany a report dated
31 January, 1994

Donald W. Tully

FIGURE 15

TABLE 3

Histogram - Gold

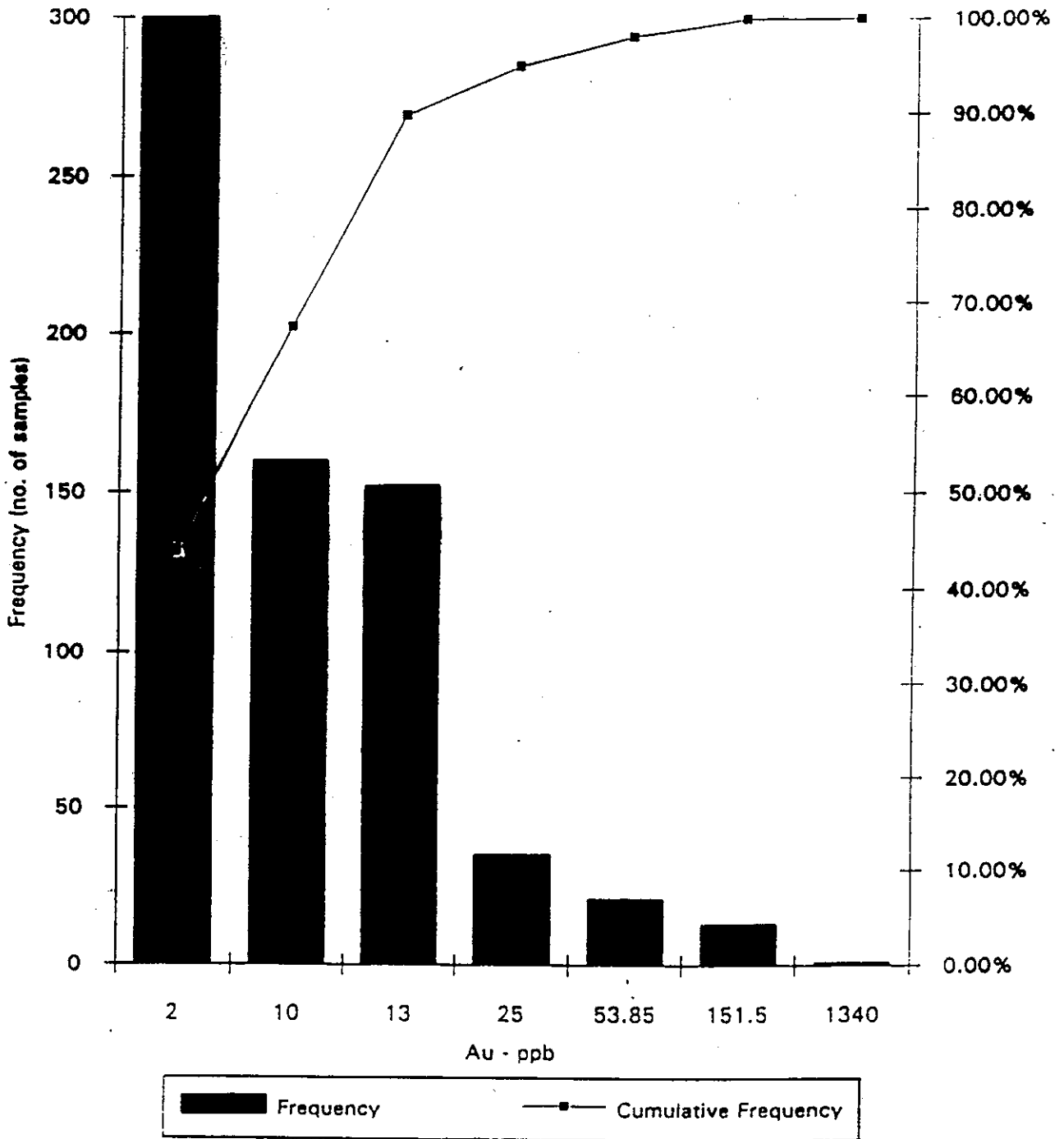


Table by G.S. Davidson, P. Geol.
Modified by D.W. Tully, P. Eng.
to accompany a report dated
31 January, 1994

Donald W. Tully

FIGURE 16

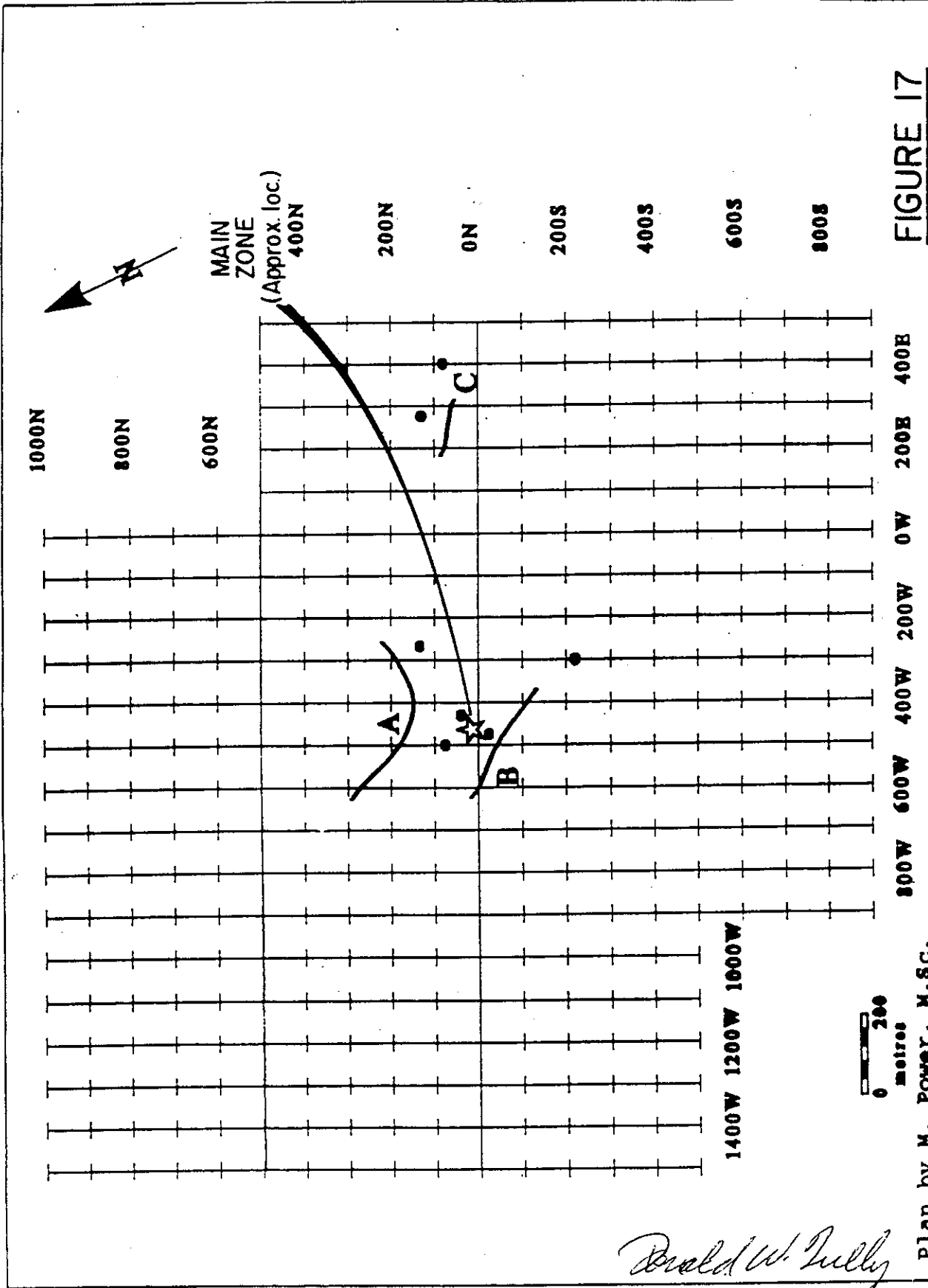


FIGURE 17

PROBE RESOURCES		Claims: ELLEN 1-37
ELLEN PROPERTY Anomaly Map		Mining District: Whitehorse
AMEROK GEOPHYSICS		NTS: 15 A 13
		INTERPRETER: M. Power
		DATE: 15 OCT 93 Figure: 9

Plan by M. Power, M.Sc.
 Modified by D.W. Tully, P.Eng.
 to accompany a report dated
 31 January, 1994

Donald W. Tully

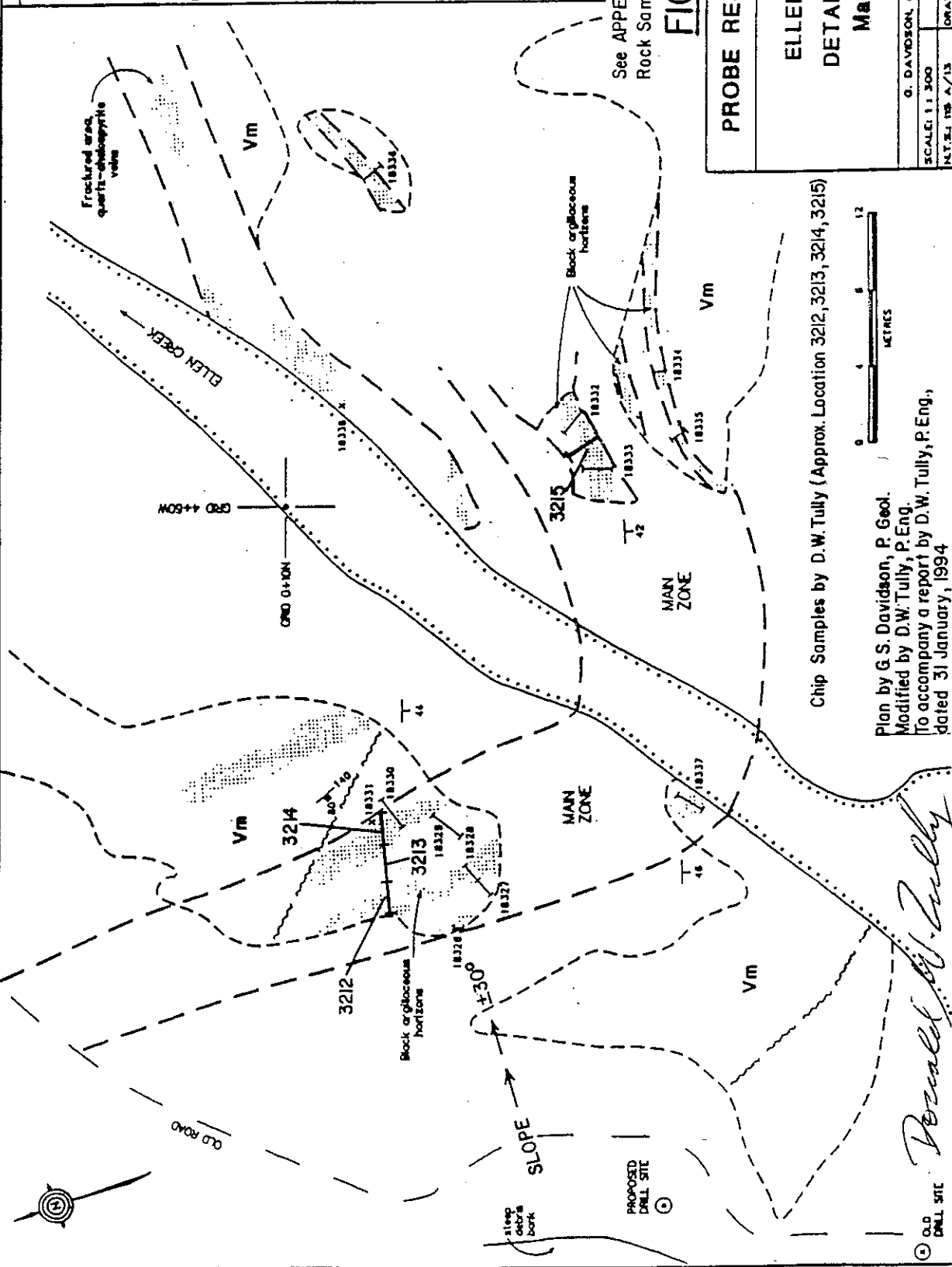
- - Sulphide showing
- - HLEM Conductor Axis

LEGEND and SYMBOLS

- V-m: Oolitic mafic volcanics, Lef's
- Stippled area: chertophyllite and pyrite lenses, quartz veins
- Strike and dip: 46
- Fracture, strike and dip: 80° 1/10
- Chip sample number: 18330
- Drill sample number: X 18331
- Fracture zone: ~~~~~

ROCK SAMPLE RESULTS

SAMPLE NO.	MOH (cm)	Gr. (ppm %)	Au (g/t)
18326	50	2.4X	109
18327	100	2.4X	943
18328	100	8.0X	518
18328	180	16.434	2284
18330	160	17.383	274
18331	97cm	21X	6808
18332	150	4.0X	373
18333	150	2.8X	844
18334	50	3.5X	58
18335	90	9781	23
18336	120	4908	44
18337	150	8.7X	1080
18338	97cm	16X	304



See APPENDIX B for Assays and Rock Sample Description.

FIGURE I2

PROBE RESOURCES LTD.

ELLEN CLAIMS
DETAILED PLAN
Main Zone

Chip Samples by D.W. Tully (Approx. Location 3212, 3213, 3214, 3215)

Plan by G.S. Davidson, P. Geol.
Modified by D.W. Tully, P. Eng.
To accompany a report by D.W. Tully, P. Eng.,
dated 31 January, 1994

Donald W. Tully

G. DAVIDSON, CONSULTING GEOLOGIST	
SCALE: 1:1 500	DATE: October 1992
N.T.S.I. 18 A/13	DRAWN: GDS
	FIGURE 8

PROPOSED DRILL SITE

SYMBOLS

x 117 Soil sample location, Cu-ppm
(see other symbols below)

Plan by G.S. Davidson, P. Geol.
Modified by D.W. Tully, P. Eng.
to accompany a report dated
31 January, 1994

Arnold W. Tully

COPPER GEOCHEMISTRY

PPM	PERCENTILE
4818	MAXIMUM
652	98
412	95
286	90
173	70
126	50
32	MINIMUM

Number of Samples - 678
Ins - Insufficient pulp for assay

○ Zone of Anomalous
Copper Values

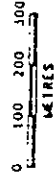


FIGURE 13

PROBE RESOURCES LTD.

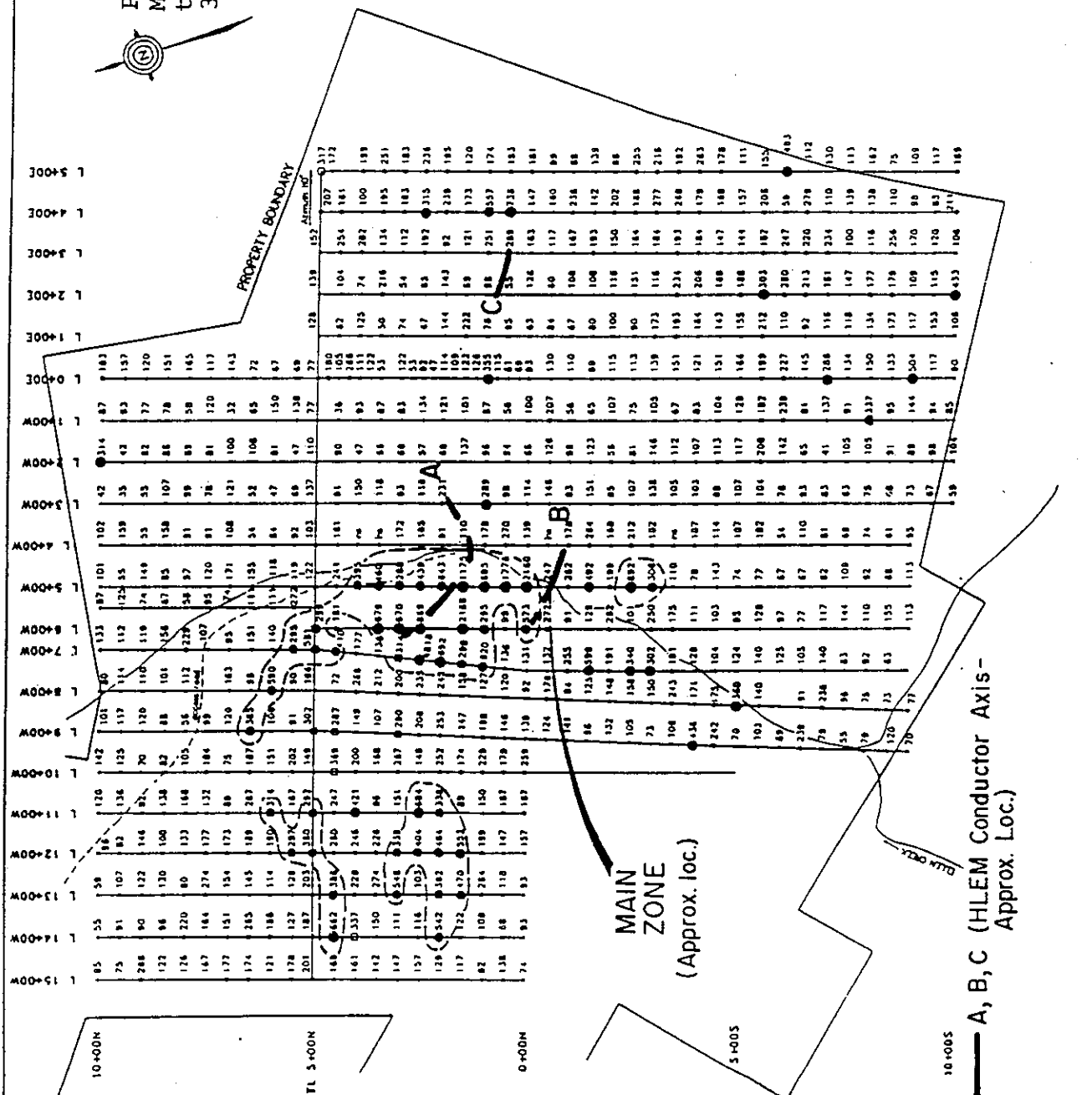
ELLEN CLAIMS

COPPER GEOCHEMISTRY - ppm

G. DAVIDSON, CONSULTING GEOLOGIST

SCALE: 1:15,000 DATE: October 1993

N.T.S.I. 10. A/13 DRAWN: GDS FIGURE 7



A, B, C (HLEM Conductor Axis -
Approx. Loc.)

TABLE 2

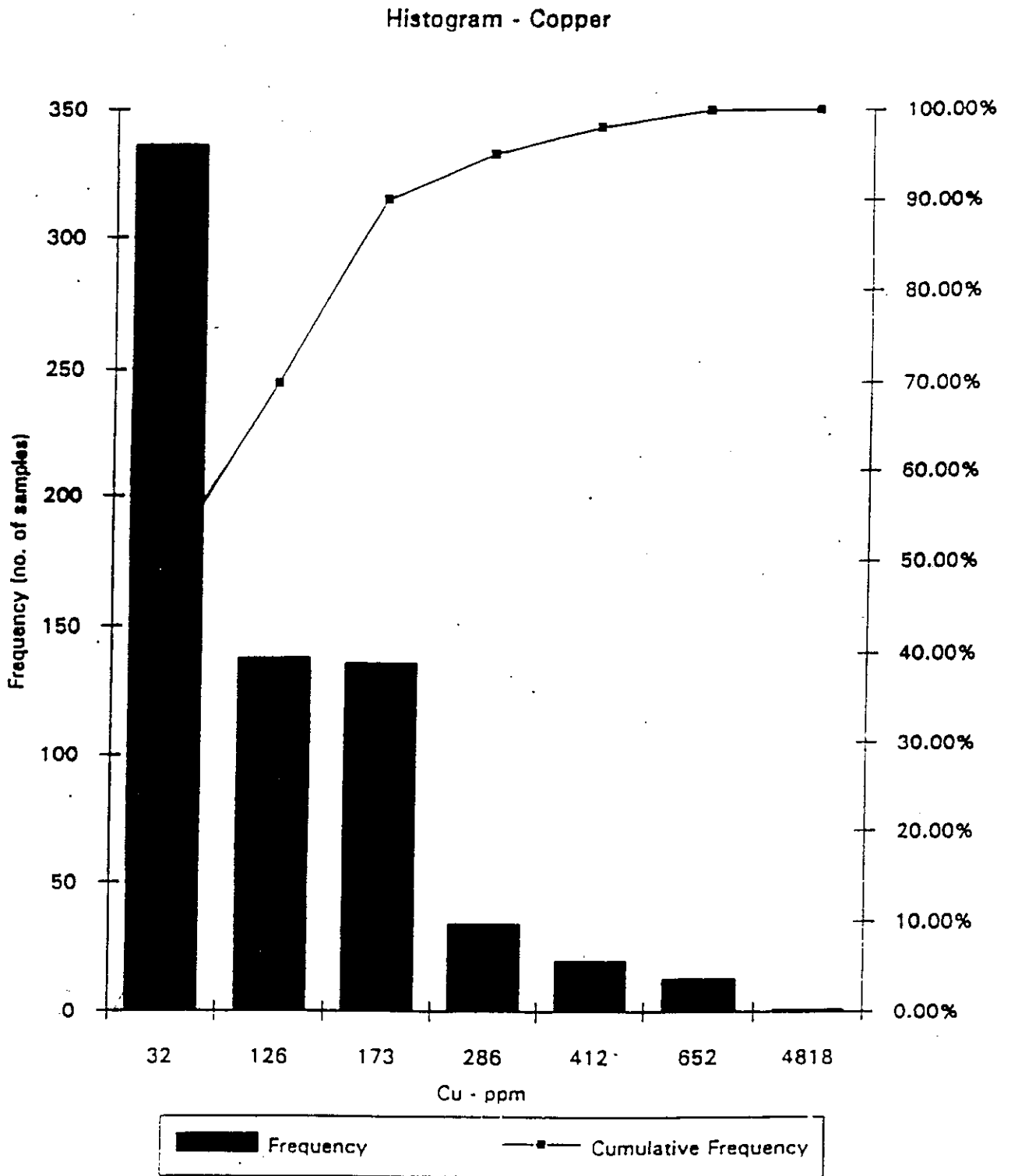


Table by G.S. Davidson, P. Geol.
Modified by D.W. Tully, P. Eng.
to accompany a report dated
31 January, 1994

Donald W. Tully

FIGURE 15

TABLE 3

Histogram - Gold

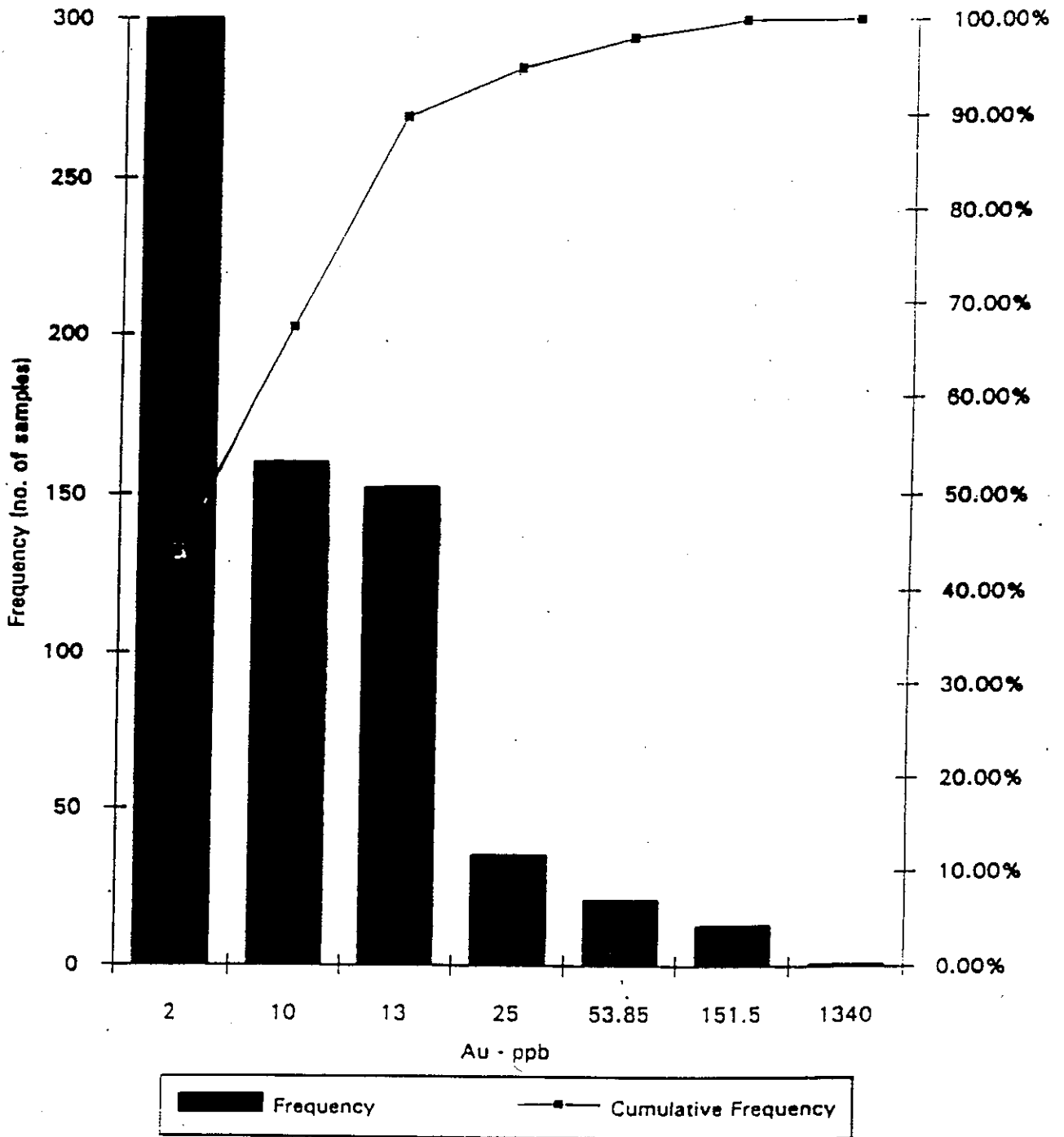


Table by G.S.Davidson, P.Geol.
 Modified by D.W.Tully, P.Eng.
 to accompany a report dated
 31 January, 1994

Donald W. Tully

FIGURE 16

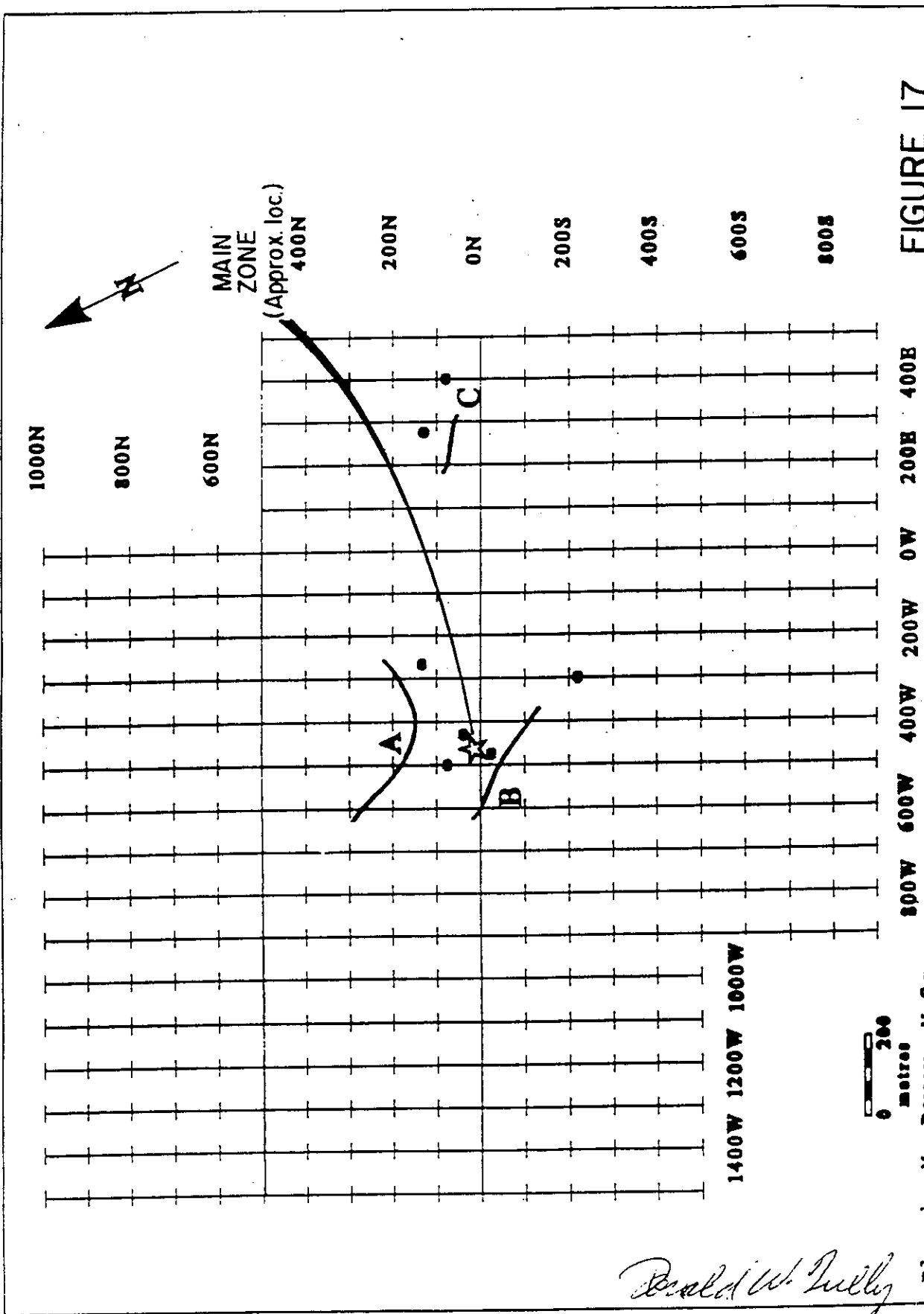


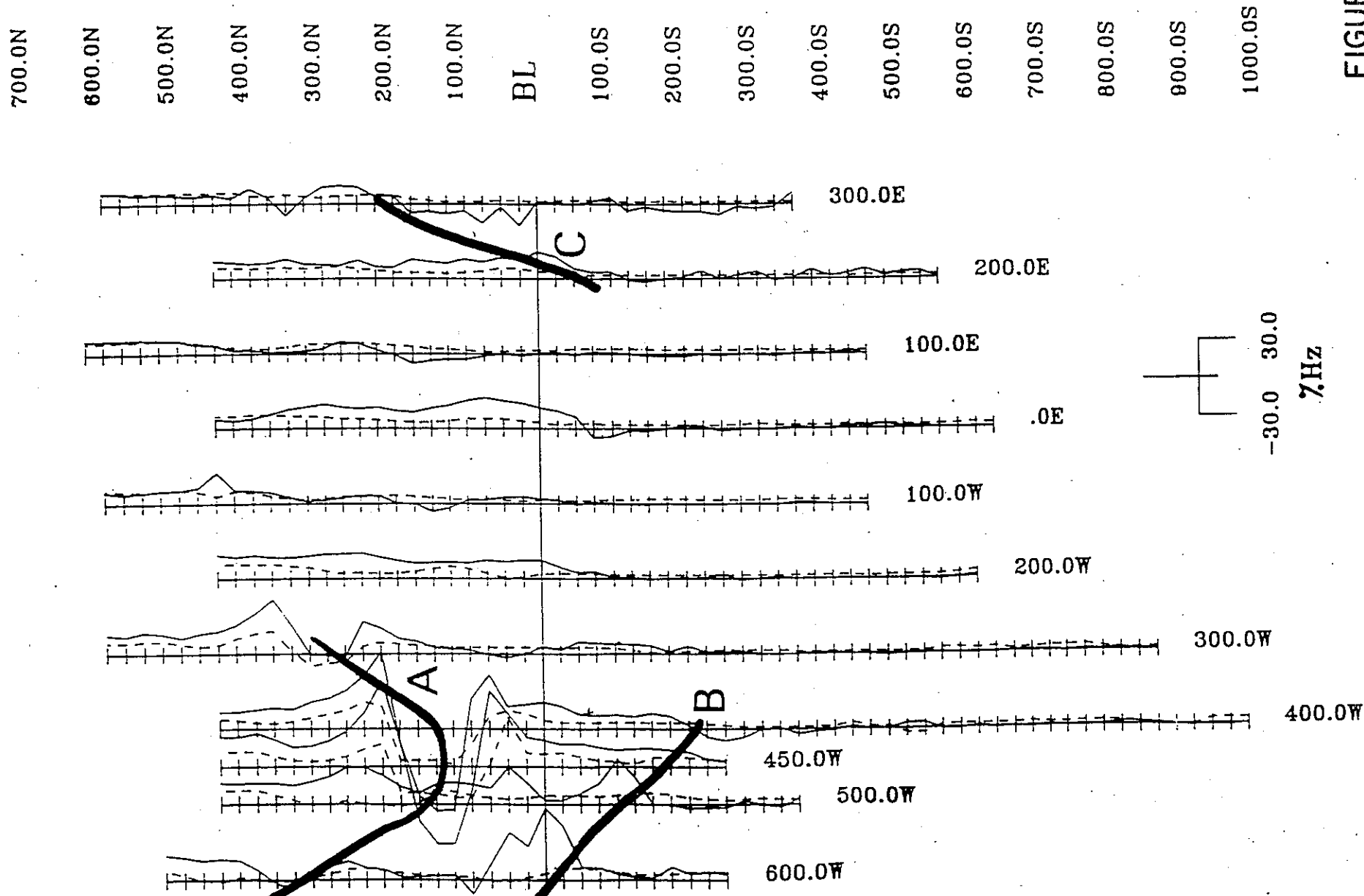
FIGURE 17

PROBE RESOURCES	
ELLEN PROPERTY Anomaly Map	
Claims: ELLEN I-37	Mapping District: Whitehorse
NTS: 1:5 A 13	
INTERPRETER: M. Power	
DATE: 15 OCT 93 Page: 9	

Plan by M. Power, M.Sc.
 Modified by D.W. Tully, P. Eng.
 to accompany a report dated
 31 January, 1994

- - Sulphide showing
- - HLEM Conductor Axis

Donald W. Tully



FIGURE

(In-Phase solid / Quadr

PROBE RESOURCES	0
ELLEN PROPERTY Maximin 1-9 Survey	Maping D NIS: 15 OPERAT
AMEROK GEOPHYSICS	DATE: 1

Conductor axis

Coil Spacing: 100 m
Frequency: 3520 Hz

0 metres 200

Plan by G. Lee, P. Eng.
Modified by D.W. Tully, P. Eng.
to accompany a report dated
31 January, 1994

Donald W. Tully

Coil spacing: 50.0 m

3520.0 Hz

20.0
Hz
(%)
.0
-20.0

1760.0 Hz

440.0 Hz

Coil spacing: 100.0 m

3520.0 Hz

40.0
Hz
(%)
.0
-40.0

880.0 Hz

220.0 Hz

Coil spacing: 150.0 m

1760.0 Hz

40.0
Hz
(%)
.0
-40.0

880.0 Hz

440.0 Hz

300.0S 200.0S 100.0S .0N 100.0N 200.0N 300.0N 400.0N 500.0N

FIGURE 19

(In-phase solid / Quadrature dashed)

Donald W. Tully
Stacked Profiles by G. Lee, P. Eng
to accompany a report by
D. W. Tully, P. Eng. dated
31 January, 1994

Stacked Profiles - Line 400W

PROBE RESOURCES

ELLEN PROPERTY
Maximin I-9 Survey

AMEROK GEOPHYSICS

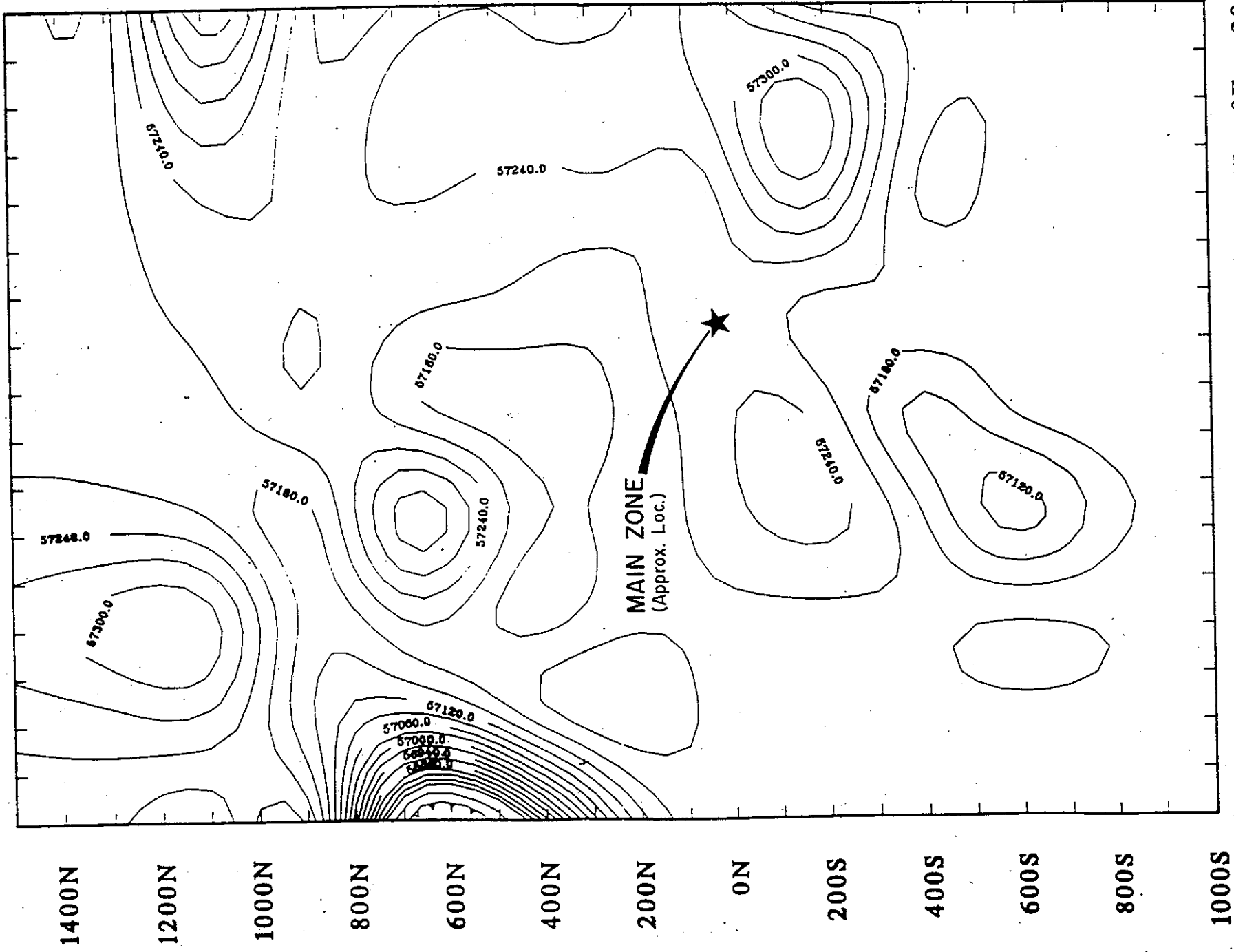
Client: ELLEN I-37

Mining District: Whitehorse

NTS: IS A 13

OPERATOR: G. Lee P.Eng.

DATE: 15 OCT 93 | Page 5



1400W 1200W 1000W 800W 600W 400W 200W 0E 200E

Magnetometer Plan after Amerok
 Geophysics by G.S. Davidson, P. Geol.
 to accompany a report by
 D. W. Tully, P. Eng. dated
 31 January, 1994



metres

Contour interval: 30 nT

PROBE RESOURCES	Claims: ELU
ELLEN PROPERTY Total Magnetic Field Survey	Mining District: Wfi NTS: 15 A D OPERATOR: G. Dg
AMEROK GEOPHYSICS	DATE: 5 OCT 93

FIGURE 20

Donald W. Tully